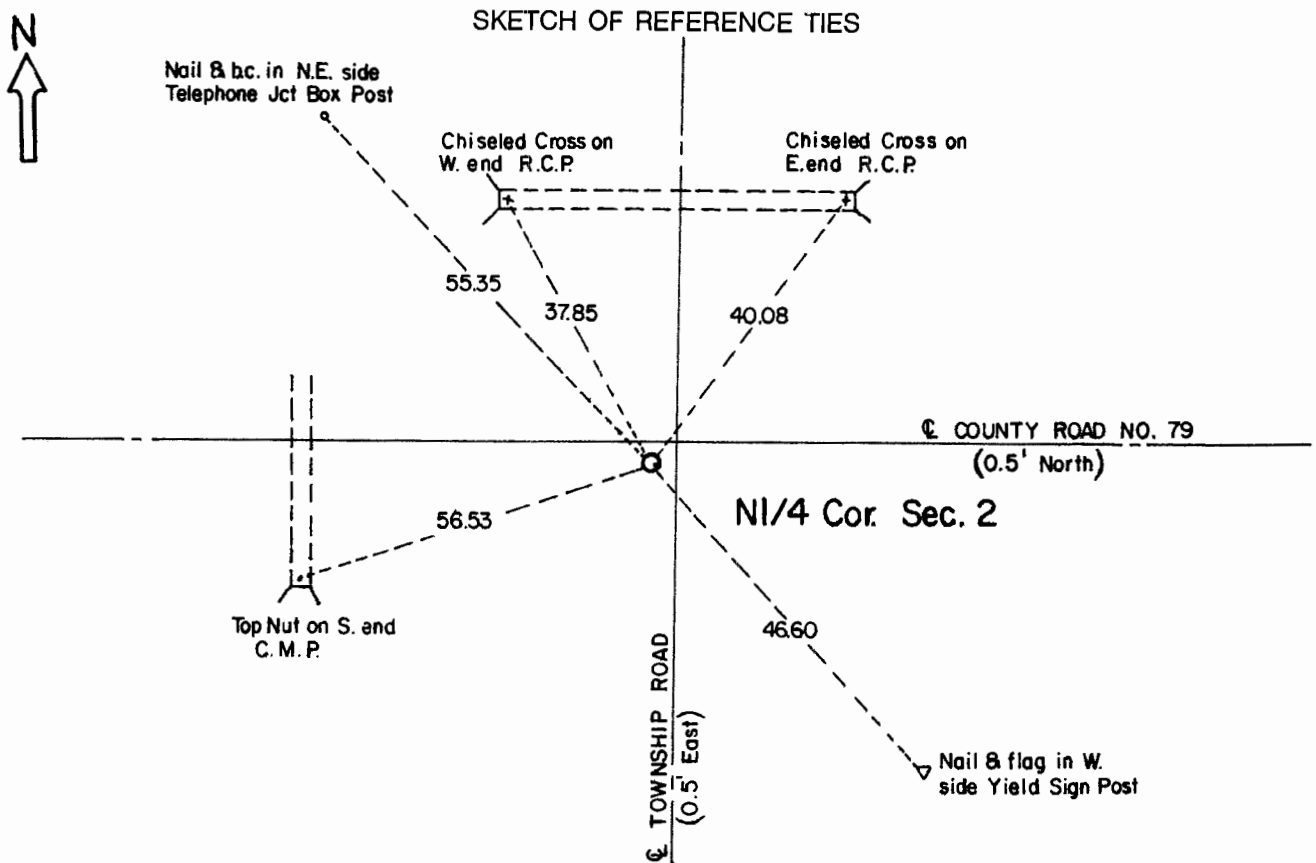


# CERTIFICATE OF LOCATION OF GOVERNMENT CORNER

**North Quarter** Corner of Section **2** , Township **107** , Range **41** 5th P.M.

STATE OF MINNESOTA, County of Murray.

**Statement:** Oct. 31, 1989 - Found a "PK" nail in the road surface with an automotive valve 2 inches below it. Placed a Minnesota Department of Transportation Cast Iron Monument at the road surface.



Statement of evidence relative to this corner location is on the back of page.

I hereby certify that this document and the data contained herein was prepared by me or under my direct supervision and that I am a duly Registered Land Surveyor under the laws of the State of Minnesota.

*Duane A. Bonnema*      *Nov 6, 1989*  
 Duane A. Bonnema      Date

Minnesota Registration No. 14895

OFFICE OF THE COUNTY RECORDER  
 COUNTY OF MURRAY      **NOV 15 1989**

I hereby certify that this document was filed in the County Recorder's office at \_\_\_\_ M. on the \_\_\_\_ day of \_\_\_\_\_ A.D., 19\_\_

County Recorder *James V. Johnson*

By \_\_\_\_\_, Deputy  
 DOCUMENT NO. \_\_\_\_\_

**North Quarter Cor. Sec. 2 T107N-R41W**

**Statement:**

- July 1861 Original Government Land Office Surveyor J. W. Myers records in his field notes, "drove charred stake, made mound of earth and sod with trench pits as per instructions."*
- May 14, 1901 J. W. Woolstencroft, County Surveyor, records in the County Surveyor's Record Book, page 132 that he did a survey in Section 2 in which he used this corner.*
- March 1934 F. A. March, County Surveyor, records in the County Surveyor's Record Book, page 132, "Found Stone," while he was doing survey work in Section 2. He also established witness ties to the Corner.*
- Nov. 1969 The Murray County Highway Engineer Records show that they found a Concrete Monument at the Corner. They placed a steel pin at the Corner and established witness ties to the Corner.*
- Sept. 26, 1985 The Murray County Highway Engineer Records show that they placed a P.K. Nail in the bituminous surface above the steel pin and verified the witness ties established in 1969.*
- Oct. 31, 1989 Duane A. Bonnema, LS Reg. No. 14895, dug a 4 foot deep hole measuring 2 feet North-South by 4 feet East-West at this corner location. A "PK" nail was found at the pavement surface. An automotive engine valve was found 2 inches below the pavement. Natural ground level was at a depth of 2 1/2 feet. The bottom of the hole was probed, however no additional evidence of a corner monument was found. The County Highway Engineer's Office perpetuated this corner position apparently since 1934. Apparently a "stone" and a concrete monument existed at this corner at times in the past. These apparently have been removed since. A Minnesota Department of Transportation Cast Iron Monument was placed at the road surface in the position of the "PK" nail and "engine valve".*